



Let your business take its place in history.

About 100 Seneca & Oil City Business Opportunities

The Venango County Economic Development Authority, a group dedicated towards stimulating the creation and expansion of businesses within Venango County, has taken ownership of the former Oil City National Bank. Originally constructed in 1926, the building now known as 100 Seneca has undergone advanced restorations to turn it into a mixed-use facility and is seeking long-term business tenants.

Nestled in the heart of the historic Northside Business District, the tallest building in the city blends in beautifully with its neighbors that emulate Romanesque, Colonial Revival and Italiante architecture.

Whether you are a small business owner with a dream or a large company needing space to grow, 100 Seneca in Oil City, Pennsylvania, is high-visibility commercial property offering a range of opportunity with customizable floor plans, available infrastructure, architectural character, and financial incentives at a prime, easy-to-access location within the city downtown historic district. Your business can take its place in history at 100 Seneca.

Building Benefits

- Iconic appearance
- Central location
- Recent renovations (like fiber-optic internet)
- Low-interest loan available for renovations
- Business co-marketing resources
- Space size & design flexibility
- Close businesses including:
 - 16 restaurants, cafes and taverns
 - 22 shops and galleries
 - 28 other personal professional services



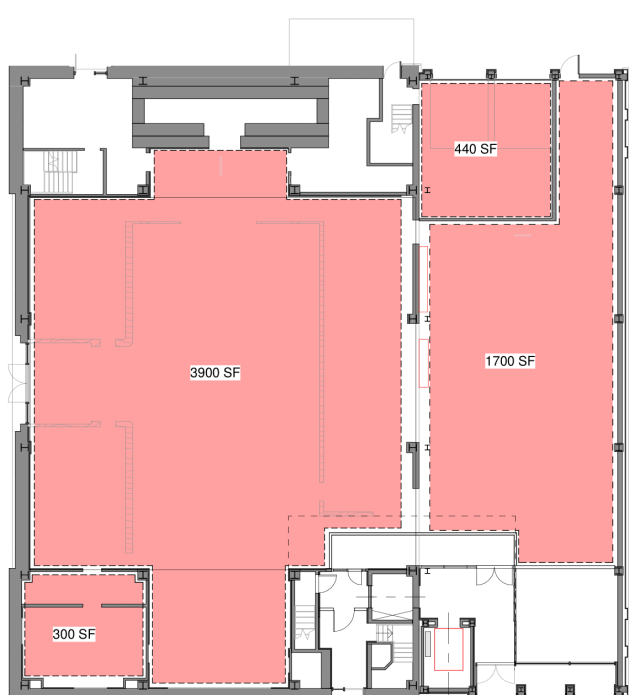
Tenant Requirements & How to Apply

Potential tenants are required to undergo an application screening, business and credit check, as well as submit a letter of intent to the VCEDA in order to qualify.

The VCEDA is offering low-interest financing to eligible prospective tenants through the VCEDA Revolving Loan Fund. Funds granted from the RLF can be used towards renovation costs at any of the available spaces at 100 Seneca.

Click below to learn more about the RLF program and tenant application process.

[LEARN MORE](#)



Floor Plan & Available Space

Main Gallery, Floor 1: up to 10,000 sq. ft. of open-concept space, featuring a balcony overlooking the impressive gallery and main entrance.

Mezzanine, Floor 2: up to 6,500 sq. ft. of available space, including the entrance balcony facing the main entrance.

Floors 3 and 4: each floor offers up to 10,000 sq. ft. each.

For additional information, contact us:

Emily Lewis | elewis@co.venango.pa.us | 814.432.9681



100SENECA
AT CORNPLANTER SQUARE

www.100Seneca.com

Socialize with us:

